

**MY CHILD IS ILL
CHRISTMAS HOLIDAYS
SYMPTOMS THAT APPEAR BEFORE 4PM ON SUNDAY 20TH DECEMBER (or within
48 hours of last being in school)**

Do they have Covid 19 symptoms?

Covid 19 symptoms:

- High temperature
- New persistent cough
- Loss of taste or smell

YES

If these symptoms start before or up to 4pm on Sunday 20th December (or within 48 hours of last being in school)

Your child needs a test –
INFORM THE SCHOOL OFFICE BY EMAIL THAT YOUR CHILD IS ILL – triplec@triple-crown.solihull.sch.uk

Your child and everyone in the household must **self isolate** until

NO
No action

Test results

Positive

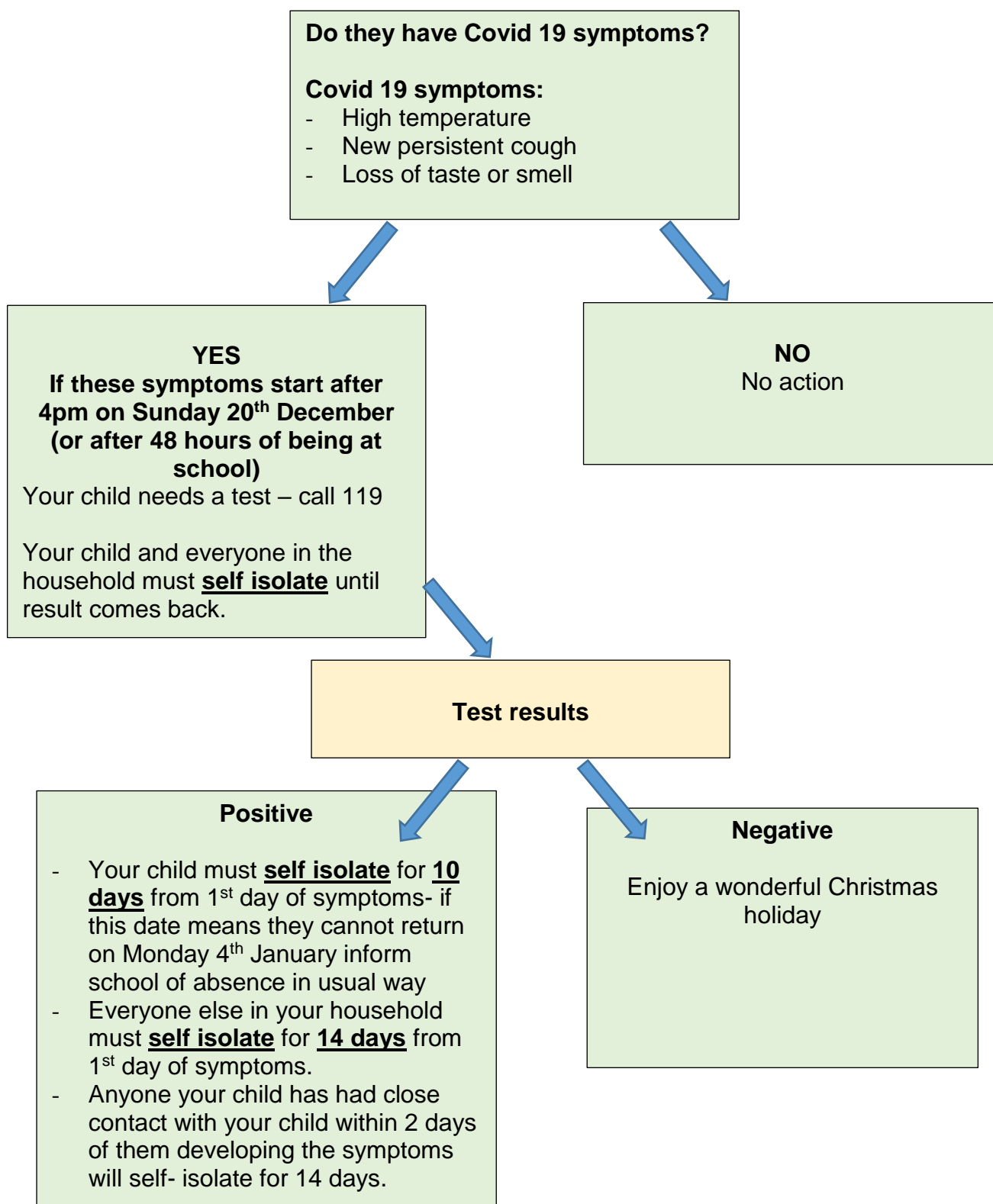
- **Inform the school office immediately by email– triplec@triple-crown.solihull.sch.uk**
- Your child must **self isolate** for **10 days** from 1st day of symptoms.
- Everyone else in your household must **self isolate** for **14 days** from 1st day of symptoms.
- The school will inform people who have been in close contact

Negative

Inform the school office immediately by email– triplec@triple-crown.solihull.sch.uk

Self isolate – this means that you must not leave your house other than to go to take a test if you need to have one. If the whole household is isolating, then you need to arrange for food deliveries etc. as you cannot go out to the shops. You cannot go to the park, to visit other people and other people cannot visit you. **You must stay at home to prevent the spread of the virus.**

**MY CHILD IS ILL
CHRISTMAS HOLIDAYS
SYMPTOMS THAT APPEAR AFTER 4PM ON SUNDAY 20TH DECEMBER (or after 48
hours from being at school) AND BEFORE RETURN TO SCHOOL ON 4TH JANUARY**



Self isolate – this means that you must not leave your house other than to go to take a test if you need to have one. If the whole household is isolating, then you need to arrange for food deliveries etc. as you cannot go out to the shops. You cannot go to the park, to visit other people and other people cannot visit you. **You must stay at home to prevent the spread of the virus.**